

# 2 Mega-pixel IR PoE Plus Speed Dome IP Camera with Extended Support



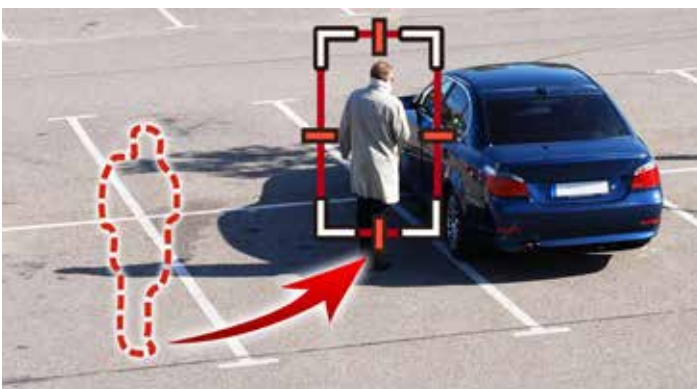
## Robust IR PTZ IP Camera for Demanding Surveillance

PLANET ICA-E6265, a high-performance outdoor IR PTZ speed dome surveillance camera, includes advanced auto tracking designed for the most demanding video surveillance applications. With powerful image of 1080p at 60fps, endless 360° pan, 36x optical zoom capabilities and 150-meter adaptive IR illuminators, it enables distant objects to be monitored in sharp detail. The ICA-E6265 has an IP66-rated housing that can withstand any harsh temperature ranging from -40°C to 55°C.



## Effective Surveillance for Wide Area Coverage

When enabling the auto-tracking function, a moving object within the camera's field of view can be automatically detected and followed like being automatically zoomed in and focused on. This is particularly beneficial in unmanned video surveillance setups with automated recording.



## Camera

- 1/2.8" 2 mega-pixel progressive scan CMOS sensor
- Auto-focal 4.6~165.6 mm, auto-iris lens
- 0.1 lux minimum illumination at F1.55
- Maximum resolution 1920 x 1080
- 36 x 16 zooming (36x optical, 16x digital) adjustment
- Endless 360-degree pan
- Auto white balance and auto electronic shutter time (1/5 ~ 1/32k sec)
- Built-in 6 adaptive IR illuminators, effective up to 150 meters
- Removable IR-cut filter for Day & Night function

## Video and Audio

- H.264/MJPEG video compression
- Simultaneous multi-stream support
- H.264 high profile, main profile and baseline
- Max. resolution of 1080p at 60fps
- Automatic object detection and tracking
- 3DNR to improve picture quality at low lux
- Digital image stabilizer supported
- True WDR enhancement function strengthens visibility under extremely bright or dark environments
- Two-way audio support with enhanced audio quality

## Network and Configuration

- Compliant with IEEE 802.3at high PoE interface for flexible deployment
- Supports both IPv6 and IPv4 protocols
- RTSP, UPnP, Bonjour and HTTPS protocols selectable

## Easy Installation and Management

- ONVIF compliant for interoperability
- IK10 and IP66 rating
- Micro SD card slot for video recording
- Digital Input/Output for integration with sensors and alarms
- Fan and heater with fully automatic intelligent control
- Cam viewer E-series software supported – CV7L, CV7-VA, CV7-LP and mobile app

*Extended Support with Specific Software*

The ICA-E6265 IP camera is able to provide advanced surveillance applications with specific software such as video analytics. It supports PLANET CV7-VA video analytics that is designed to transform your video surveillance network into a smart detection system. The software provides Enter Area, People Counting, Missing Object, Line Crossing, Unattended Object and Tamper functions. Once a suspicious activity is detected, users can play back to watch these events and use them as references or evidences if needed.

## Intelligent Management



**CV7-VA Software**

*Professional, High-resolution Network Camera*

The ICA-E6265 is a high-resolution camera for the round-the-clock surveillance. This camera supports H.264 and MJPEG compression formats and delivers excellent picture quality in 2 mega-pixel resolutions at 60 frames per second (fps).

## Full HD Resolution



*Day & Night Functionality*

To adapt to constantly changing lighting conditions during the day and night, the ICA-E6265 comes with a removable IR-cut filter and adaptive IR illuminators, which enable the camera to provide color video when there is sufficient light, and black/white video in dark conditions. The ICA-E6265 is able to maintain clear images 24 hours a day.



*Exceptional Image Quality*

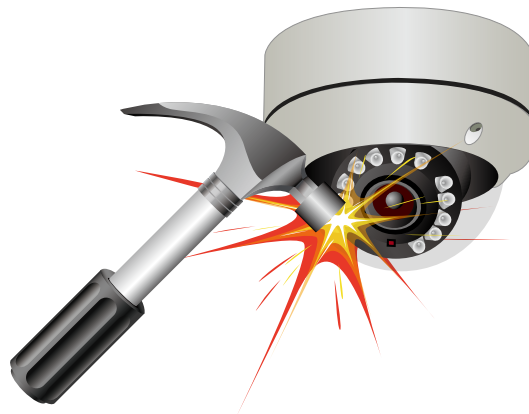
Together with powerful image processing attributes like True Wide Dynamic Range (True WDR) and 3-dimensional Noise Reduction (3DNR) technology, the ICA-E6265 is able to filter the intense backlight surrounding a subject and remove noises from video signal. The result is that an extremely clear and exquisite picture quality can be produced even under any challenging lighting conditions.



*High-level Outdoor Protection*

With the IK10-rated vandal-proof metal casing and water-repellent glass, the ICA-E6265 ensures resistance against impacts. Moreover, rain, water jets and dust are not able to seep into its body, making the ICA-E6265 a reliable unit. It definitely operates under any extreme weather conditions.

**Vandal-proof**



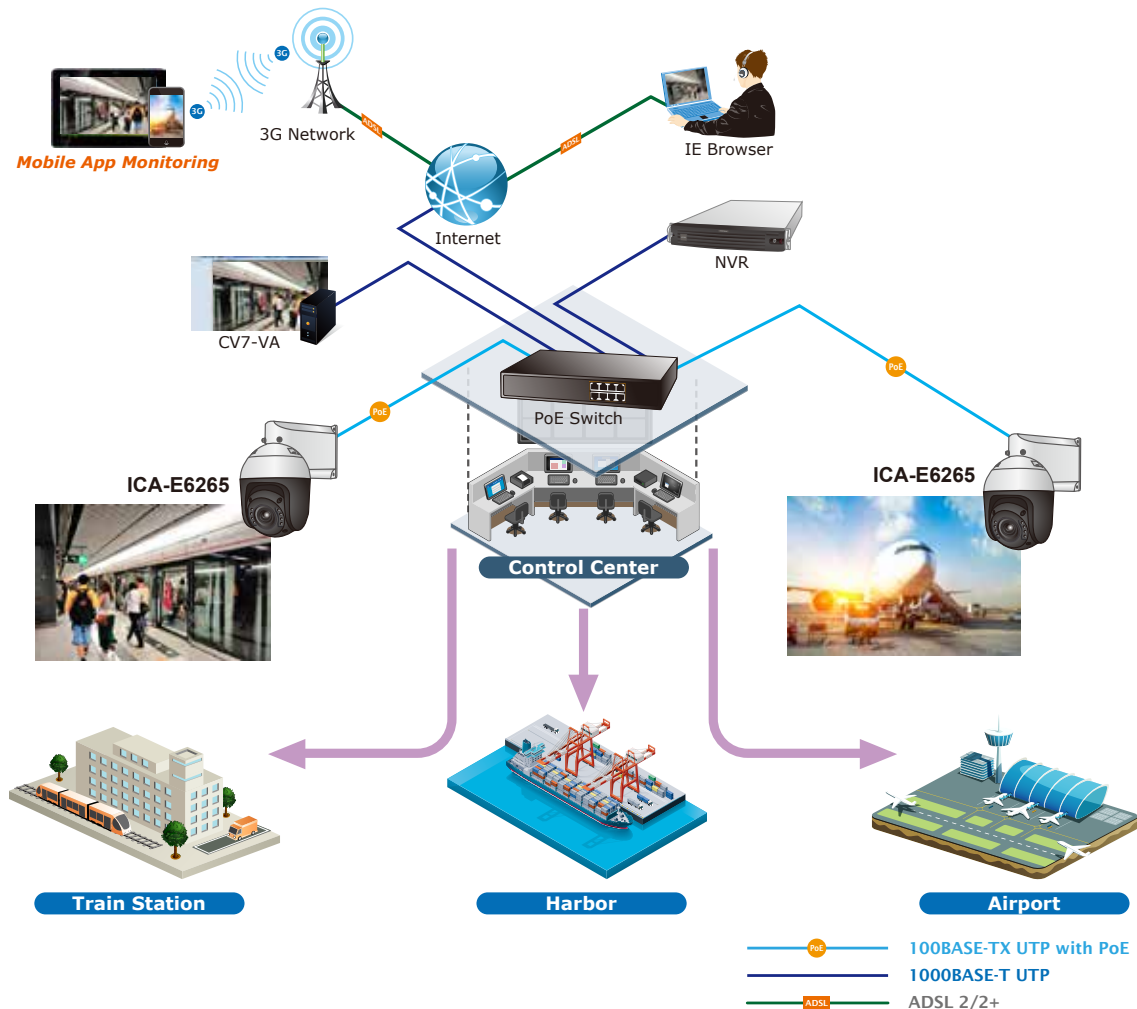
*Flexible Installation and Power Functionality*

The ICA-E6265, adopting the IEEE 802.3at high Power over Ethernet technology, can be powered from a PoE injector via the network, which eliminates the need for power cables and reduces installation costs. In addition, the ICA-E6265 is ONVIF-compliant and therefore interoperable with other brands in the market, greatly supporting users to integrate with their existing surveillance network.



## Applications

PLANET ICA-E6265 offers HDTV 1080p video, 36x optical zoom, and high-speed pan/tilt performance for exceptional coverage of large areas and great detail when zooming in. With adaptive IR illuminators and true WDR, the ICA-E6265 enables to capture high-quality images in the day or night. Moreover, the IP66-rated and IK10 unit can be installed in indoor and outdoor establishments like airports, shopping malls, train stations, and more.



## Specifications

Model	ICA-E6265
<b>Camera</b>	
Image Device	1/2.8" 2 mega-pixel progressive scan CMOS Sensor
Lens	Auto-focal 4.6~165.6 mm/F1.55~5.0, DC-iris Mechanical IR-cut filter Horizontal Viewing Angle: 2.7~62.7 degrees Vertical Viewing Angle: 1.6~38.5 degrees
Min. Illumination	Color: 0.1 lux at F1.55 (30 IRE, 2400°K) B/W: 0 lux at F1.55 (IR LED on)
IR Illumination LED	Adaptive IR LED x 6, 850nm Built-in IR illuminators, effective up to 150 meters (0 lux, 30 IRE, Gain 255, Auto shutter mode)
Effective Pixels	1945 (H) x 1097 (V) (2.13MP)
Horizontal Resolution	1800 TVL
Electronic Shutter	1/5~1/32000 sec
S/N Ratio	56dB
<b>Pan, Tilt, Zoom</b>	
Optical Zoom	36x
Digital Zoom	16x
Tele to Wide Speed	2.0 sec (wide to tele)
Pan Angle	360 degrees (endless)
Tilt Angle	-20 ~ 200 degrees
Manual Panning Speed	0.32 ~ 54.72 degrees/sec.
Manual Tilting Speed	0.16 ~ 27.36 degrees/sec.
Preset Points	256
Preset Tours	10
Preset Panning Accuracy	0.265 degrees
Preset Tilting Accuracy	0.265 degrees
Preset Panning Speed	0.16~300 degrees/sec.
Preset Tilting Speed	0.16~150 degrees/sec.
Resume after Power Loss	Yes
Auto Scan	Yes
Protocol	Sony VISCA, Pelco D, Pelco P
Absolute Position	Yes
PTZ Auto Tracking	Yes
<b>Image</b>	
Video Encoder	H.264 (Baseline/ Main/ High profile)/MJPEG
Video Profile	H.264: 1920 x 1080, 1280 x 720, 640 x 480, 320 x 240 MJPEG: 1920 x 1080, 1280 x 720, 640 x 480, 320 x 240
Frame Rate	1920 x 1080 up to 60fps 1280 x 720 up to 60fps 640 x 480 up to 30fps 320 x 240 up to 30fps
Image Setting	Video flipping, video mirroring, brightness, contrast, automatic gain control, 2D+3D digital noise reduction, edge enhancement, true WDR (145dB), exposure, white balance (automatic, manual or hold), OSD, privacy mask (20 regions), digital image stabilizer
Streaming	Simultaneous triple streams based on three configurations Controllable frame rate and bandwidth Constant and variable bit rate
Bit Rate	128 Kbps - 12 Mbps (per stream)
Text Overlay	User defined text on video
<b>Audio</b>	
Audio Streaming	Two-way audio
Compression	8 kHz, 16 bit encoding, Mono, PCM, G.711-Alaw, G.711-Ulaw
Audio Input/Audio Out	Line-in, Line-out
<b>Network and Configuration</b>	
Network Standard	IEEE 802.3 10BASE-T IEEE 802.3u 100BASE-TX
Protocol and Service	TCP, UDP, HTTP, HTTPS, DHCP, PPPoE, RTP, RTSP, IPv6, DNS, PLANET DDNS, PLANET Easy DDNS, NTP, ICMP, ARP, IGMP, SMTP, FTP, UPnP, SNMP, Bonjour
Security	Password protection, IP address filtering, HTTPS encryption, anonymous login, 802.1X network access control
Users	10 simultaneous unicast users

System Integration	
Application Programming Interface	Software Development Kit (SDK) available; ONVIF compliant
Alarm Triggering	Video motion detection (10 regions), tamper, shock detection, sound detection and external input
Alarm Events	Notify control center, go to PTZ preset point or preset tour, change camera settings, command other devices, e-mail notification with snapshots, save video or snapshot to local storage, upload video and snapshot to FTP server, activate external device through digital output
General	
Power Supply	High PoE (IEEE 802.3at) AC 24V, 3A
Power Consumption	PoE: 50W (with IR, fan and heater)* AC 24V: 62W (with IR, fan and heater)* * When IR or heater is on, it is recommended to power on the camera by the 60-watt ultra PoE injector included in the package.
Housing	IK10 and IP66 rating
Operating Temperature	-40 ~ 55 degrees C (within 30 mins)
Operating Humidity	10 ~ 85% (non-condensing)
Weight	3135g (6.91lb)
Dimensions (Φ x H)	170 x 260 mm (6.69" x 10.23")
Emission	CE, FCC
Connectors	10/100Mbps Ethernet, RJ45 Micro SDHC card slot (max. 32GB, class 10) Terminal block for 4 alarm inputs and 2 outputs External mic input Audio out AC power jack

## Ordering Information

ICA-E6265	2 Mega-pixel IR PoE Plus Speed Dome IP Camera with Extended Support
-----------	---

## Related Products

ICA-E3550V	5 Mega-pixel Bullet IR PoE IP Camera with Extended Support
ICA-E5550V	5 Mega-pixel Vandalproof IR PoE IP Camera with Extended Support
ICA-E6260	2 Mega-pixel PoE Plus Speed Dome IP Camera with Extended Support
ICA-E8550	5 Mega-pixel Outdoor IR PoE Fisheye IP Camera with Extended Support
NVR-E6480	64-Ch Windows-based Network Video Recorder with 8-Bay Hard Disks
CV7-VA Series	4/9-Channel Cam Viewer E-series for Intelligent Management
CV7-LP Series	2/4-Channel Cam Viewer E-series for Automatic License Plate Recognition
POE-171	Single-Port 10/100/1000Mbps Ultra PoE Injector (60 Watts)
POE-172	Single-Port 10/100/1000Mbps Ultra PoE Injector (60 Watts, internal PWR)
POE-173	60-watt Ultra Power over Ethernet Injector

### PLANET Technology Corporation

11F., No.96, Minquan Rd., Xindian Dist., New Taipei City  
231, Taiwan (R.O.C.)  
Tel: 886-2-2219-9518 Fax: 886-2-2219-9528  
Email: sales@planet.com.tw www.planet.com.tw



PLANET reserves the right to change specifications without prior notice. All brand names and trademarks are property of their respective owners. Copyright © 2018 PLANET Technology Corp. All rights reserved.

ICA-E6265