

**Industrial IP67-rated
4-Port 10/100/1000T 802.3at PoE
+ 2-Port 10/100/1000T
Managed Ethernet Switch (-40~75 degrees C, 24V)**

IGS-5227-4MP2MT

Quick Installation Guide

Table of Contents

1. Package Contents	3
2. M12 A-coded Connector Pin Assignment	4
3. M12 (8-pin, A-coded Male) to RJ45 (8-pin) Straight-through UTP Cabling	5
4. Connecting M12 Cable to the Industrial Managed Switch	6
5. M23 DC Power Cable Pin Assignment	9
6. Requirements	10
7. Starting Web Management	11
8. Saving Configuration via Web	14
9. Recovering Back to Default Configuration.....	15
10. Customer Support	16

1. Package Contents

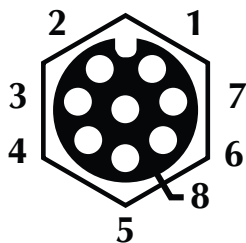
Thank you for purchasing PLANET Industrial L2+ Managed Ethernet Switch. **“Industrial Managed Switch”** is used as an alternative name in this Quick Installation Guide. Open the box of the Industrial Managed Switch and carefully unpack it. The box should contain the following items:

- | | |
|--|-----|
| ➤ The Industrial Managed Switch | x 1 |
| ➤ Quick Installation Guide | x 1 |
| ➤ 2m 8-pin A-coded M12-to-RJ45 UTP Cable | x 1 |
| ➤ DIN Rail Kit | x 1 |
| ➤ Wall-mount Kit | x 1 |

If any item is found missing or damaged, please contact your local reseller for replacement.

2. M12 A-coded Connector Pin Assignment

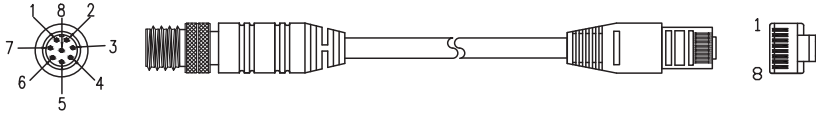
The industrial managed switch front panel provides six 10/100/1000BASE-T Ethernet ports in the form of M12 8-pin A-coded female connector. These ports are designed for Ethernet equipment connection through Cat5/5e UTP cables. The M12 8-pin A-coded input interface pinout is shown below:



Pin	Con
1	DA+
2	DA-
3	DB+
4	DC+
5	DC-
6	DB-
7	DD+
8	DD-

8-pin M12 A-coded Female 10/100/1000T Connector Pin Assignment

3. M12 (8-pin, A-coded Male) to RJ45 (8-pin) Straight-through UTP Cabling



M12 A-code Male Connector Pin No.	MDI 1000BASE-T Signal ID	T568B Color	RJ45 Connector Pin No.
1	BI_DA+	white/orange	1
2	BI_DA-	orange	2
3	BI_DB+	white/green	3
4	BI_DC+	blue	4
5	BI_DC-	white/blue	5
6	BI_DB-	green	6
7	BI_DD+	white/brown	7
8	BI_DD-	brown	8



Note

As each Ethernet port of the Industrial Managed Switch is running in auto negotiation mode, make sure the Ethernet ports of the corresponding Ethernet devices are also running in auto negotiation mode, otherwise, the Ethernet performance will be poor.

4. Connecting M12 Cable to the Industrial Managed Switch

Step 1: Turn counterclockwise to remove the waterproof screw nuts of an M12 connector and M23 power input.



Step 2: Insert the M12 UTP male connector into the M12 female Gigabit Ethernet port of the Industrial Managed Switch.



Step 5: Turn clockwise to tighten the screw nut of the M23 power connector.



Note

Before connecting the DC power cord, please check whether your local DC power source is stable.



Note

Make sure to tightly close all interfaces to have waterproof effect.

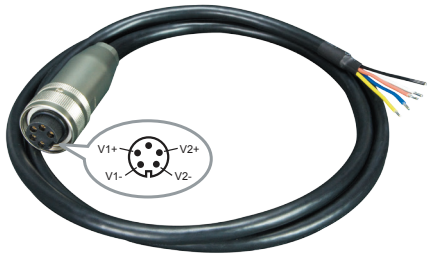
5. M23 DC Power Cable Pin Assignment

The front panel of the Industrial Managed Switch provides one M23 DC power 5-pin male connector for DC power input. Please use the power cable with the M23 DC power 5-pin female connector from the Industrial Managed Switch package for DC power input. The M23 DC power cable pin assignment is shown below:



Note

1. The box doesn't contain the **M23 5-pin A-coded female connector power cable**.
2. Please contact your local reseller to purchase **CB-M23F5F-120** from PLANET.



CB-M23F5F-120 M23 DC power cable pin assignment and wiring code



V1 positive (+) pin = white cable

V1 negative (-) pin = brown cable

V2 positive (+) pin = black cable

V2 negative (-) pin = yellow cable



Note

- A. Make sure you connect the correct power pin to your DC power source.
 1. The wire gauge for the power cable should be in the range of 12 ~ 24 AWG.
 2. The DC power input range is 24 ~ 48V DC.
- B. There are two methods to install the Industrial Managed Switch – DIN-rail mounting and wall-mount plate mounting. For more detailed information, please refer to Chapter 2 of the user's manual.

6. Requirements

Workstations running Windows XP/2003/Vista/7/8/10/2008, MAC OS X or later, Linux, UNIX, or other platforms are compatible with TCP/IP Protocols.

Workstations are installed with Ethernet NIC (Network Interface Card)

Ethernet Port Connection

- Network cables -- Use standard network (UTP) cables with RJ45 connectors.
- The above PC is installed with Web browser and JAVA runtime environment plug-in.



Note

It is recommended to use Internet Explore 8.0 or above to access the Industrial Managed Switch. If the Web interface of the Industrial Managed Switch is not accessible, please turn off the anti-virus software or firewall and then try it again.

7. Starting Web Management

The following shows how to start up the Web Management of the Industrial Managed Switch. Note the Industrial Managed Switch is configured through an Ethernet connection. Please make sure the manager PC must be set to the same IP subnet address.

For example, the default IP address of the Industrial Managed Switch is 192.168.0.100, then the manager PC should be set to 192.168.0.x (where x is a number between 1 and 254, except 100), and the default subnet mask is 255.255.255.0.

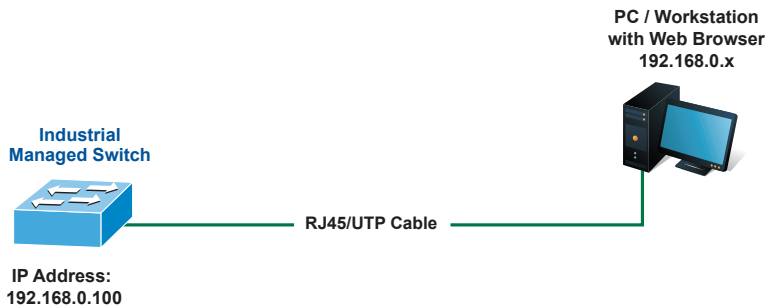


Figure 7-1: IP Management Diagram

Logging in to the Industrial Managed Switch

1. Use Internet Explorer 8.0 or above Web browser and enter IP address **<http://192.168.0.100>** (default IP address) to access the Web interface.
2. When the following dialog box appears, please enter the default user name and password "**admin**". The login screen in Figure 7-2 appears.

Default Username: **admin**

Default Password: **admin**

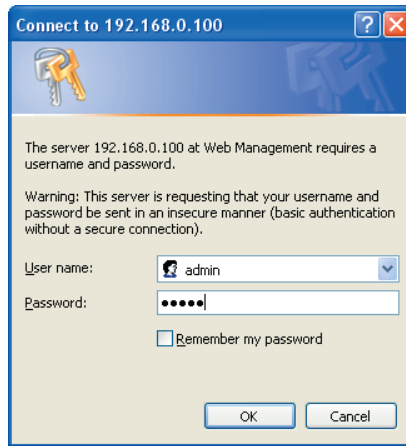


Figure 7-2: Login Screen

3. After entering the password, the main screen appears as Figure 7-3 shows.



Figure 7-3: Web Main Screen of Industrial Managed Switch

The Switch Menu on the left of the Web page lets you access all the commands and statistics the Industrial Managed Switch provides.

- ▶ System
- ▶ SNMP
- ▶ Port Management
- ▶ Link Aggregation
- ▶ VLANs
- ▶ Spanning Tree
- ▶ Multicast
- ▶ QoS
- ▶ Access Control List
- ▶ Authentication
- ▶ Security
- ▶ MAC Address Table
- ▶ LLDP
- ▶ Diagnostics
- ▶ PoE
- ▶ Loop Protection
- ▶ RMON
- ▶ PTP
- ▶ Ring
- ▶ Industrial Protocol

Figure 7-4: Switch Menu



Note

If you are not familiar with Switch functions or the related parameter, press **"Help icon"** anytime on the Web page to get the help description.

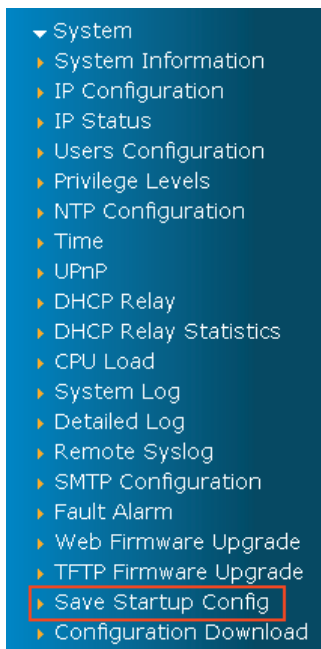
Now, you can use the Web management interface to continue the Switch management. Please refer to the user's manual for more details.

8. Saving Configuration via Web

In the Industrial Managed Switch, the running configuration file is stored in the RAM. In the current version, the running configuration sequence of **running-config** can be saved from the RAM to FLASH by executing save startup config command, so that the running configuration sequence becomes the startup configuration file, which is called configuration save.

To save all applied changes and set the current configuration as a startup configuration, the startup-configuration file will be loaded automatically across a system reboot.

1. Click **System** and **Save Startup Config**.



2. Press the "**Save Configuration**" button.



9. Recovering Back to Default Configuration

IP address has been changed or admin password has been forgotten –



Note

Follow all the recovering back to default configuration steps as shown in the example.

1. Power off the Industrial Managed Switch and remove all the existing connections.
2. Use the straight RJ45 cable to connect to port 1 and port 2 in the loop topology as shown below:



3. Power on the Industrial Managed Switch and 6 LNK/ACT LEDs will be lit.
4. Resetting Industrial Managed Switch to the factory default is done when 6 LNK/ACT LEDs are lit again.
5. Remove the RJ45 cable from port 1 and port 2.
6. Reset the Industrial Managed Switch to Factory Default configuration. The Industrial Managed Switch will then reboot and load the default settings as shown below:

Default Username: **admin**
Default Password: **admin**
Default IP Address: **192.168.0.100**
Default Subnet Mask: **255.255.255.0**
Default Gateway: **192.168.0.254**

10. Customer Support

Thank you for purchasing PLANET products. You can browse our online FAQ resource and User's Manual on PLANET Web site first to check if it could solve your issue. If you need more support information, please contact PLANET switch support team.

PLANET online FAQ:

<http://www.planet.com.tw/en/support/faq.php?type=1>

Switch support team mail address:

support_switch@planet.com.tw

IGS-5227-4MP2MT User's Manual:

<http://www.planet.com.tw/en/support/download.php?type1=22153&model=&type=3>



(Please select your switch model name from the drop-down menu of Product Models.)

Copyright © PLANET Technology Corp. 2017.

Contents are subject to revision without prior notice.

PLANET is a registered trademark of PLANET Technology Corp. All other trademarks belong to their respective owners.