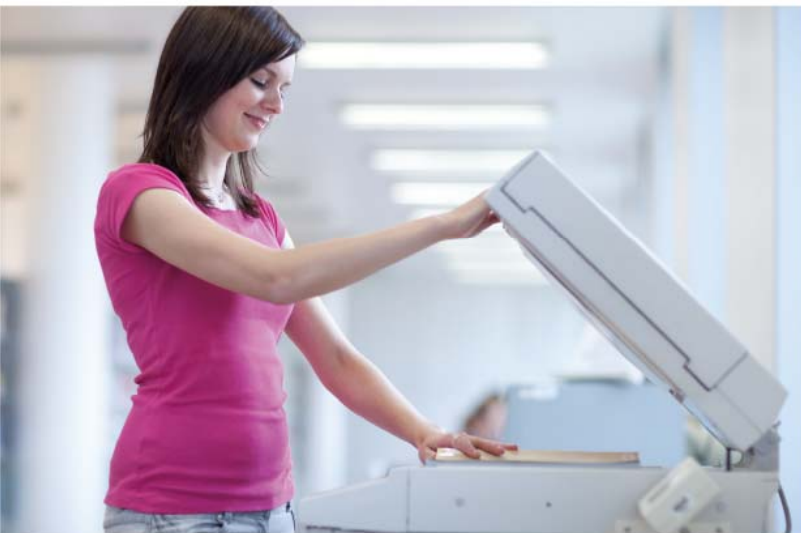


# User's Manual



## PCI Express 10G Ethernet Adapter

▶ ENW-9801/ENW-9803



### **Trademarks**

Copyright © PLANET Technology Corp. 2014.

Contents are subject to revision without prior notice.

PLANET is a registered trademark of PLANET Technology Corp. All other trademarks belong to their respective owners.

### **Disclaimer**

PLANET Technology does not warrant that the hardware will work properly in all environments and applications, and makes no warranty and representation, either implied or expressed, with respect to the quality, performance, merchantability, or fitness for a particular purpose.

PLANET has made every effort to ensure that this User's Manual is accurate; PLANET disclaims liability for any inaccuracies or omissions that may have occurred.

Information in this User's Manual is subject to change without notice and does not represent a commitment on the part of PLANET. PLANET assumes no responsibility for any inaccuracies that may be contained in this User's Manual. PLANET makes no commitment to update or keep current the information in this User's Manual, and reserves the right to make improvements to this User's Manual and/or to the products described in this User's Manual at any time without notice.

If you find information in this manual that is incorrect, misleading, or incomplete, we would appreciate your comments and suggestions.

### **FCC Warning**

This equipment has been tested and found to comply with the limits for a Class B digital device, pursuant to Part 15 of the FCC Rules. These limits are designed to provide reasonable protection against harmful interference when the equipment is operated in a commercial environment. This equipment generates, uses, and can radiate radio frequency energy and, if not installed and used in accordance with the Instruction manual, may cause harmful interference to radio communications. Operation of this equipment in a residential area is likely to cause harmful interference in which case the user will be required to correct the interference at whose own expense.

### **CE Mark Warning**

This is a Class B product. In a domestic environment, this product may cause radio interference, in which case the user may be required to take adequate measures.

### **WEEE Warning**



To avoid the potential effects on the environment and human health as a result of the presence of hazardous substances in electrical and electronic equipment, end users of electrical and electronic equipment should understand the meaning of the crossed-out wheeled bin symbol. Do not dispose of WEEE as unsorted municipal waste and have to collect such WEEE separately.

**Revision**

User's Manual on PLANET 10Gbps PCI Express Server Adapter

**FOR MODEL:** ENW-9801 and ENW-9803

**REVISION:** 2.1 (May 2014)

**Part No.:** EM-ENW9801v2\_ENW9803\_v2.1 (2080-A14100-001)

# Table of Contents

<b>CHAPTER 1 INTRODUCTION.....</b>	<b>5</b>
1.1 Package Contents .....	7
1.2 Features .....	7
1.3 Gathering Tools and Documentations .....	7
<b>CHAPTER 2 HARDWARE INSTALLATION .....</b>	<b>8</b>
2.1 LED Definition .....	8
2.2 Hardware Installation.....	9
<b>CHAPTER 3 DRIVER INSTALLATION.....</b>	<b>11</b>
3.1 Installing Driver on Windows 7 and 8 / Server 2008 and 2012.....	11
<b>CHAPTER 4 SPECIFICATIONS .....</b>	<b>16</b>

## Chapter 1 Introduction

Thank you for purchasing PLANET ENW-9801 / ENW-9803 PCI Express 10 Gigabit Ethernet adapter. It supports x4, PCI Express interface. The 10 Gigabit Ethernet adapter provides a highly cost-effective solution to upgrading to the 10 Gigabit network with your existing Ethernet infrastructures.



### **Next-generation Server Adapter for growth and expansion of networking environments**

The ENW-9801 / ENW-9803 PCI Express 10G Ethernet adapter is designed to address high-performance system application requirements. With the innovative PCI Express Bus architecture, the ENW-9801 / ENW-9803 provides better performance than the network cards based on 32/64bit PCI architecture. It provides the best solution for one of the major issues of Server Farm Networks -- communication speed. PLANET ENW-9801 / ENW-9803 is designed to connect your servers and workstations, and guarantees its extremely high throughput and excellent signal quality.

### **Server Level Adapter to Expand Networking Environments**

The ENW-9801 / ENW-9803 is an optimized 10GbE device designed for low-power, low-cost and single-port applications required in application servers, high-end workstations and personal computers. This makes it ideal for enabling 1GbE to 10GbE migration in bandwidth-intensive workstation applications and for low-end to mid-range network appliances. With the innovative PCI Express Bus architecture, it offers increased bandwidth, reliability and additional functionality compared with standard GbE network cards. The performance of throughput at rates up to 20Gbps is unbelievable, thus eliminating the bottleneck that exists with the current Gigabit network.

### **Standard 802.1Q VLAN Support**

Moreover, the ENW-9801 / ENW-9803 supports IEEE 802.1Q VLAN which allows it to operate in a flexible and secure network environment. With 16K jumbo frame ability and IEEE 802.3 flow control support, it further optimizes throughput and wire-speed packet transfer performance without risk of packet loss. The high data throughput of the device makes it ideal for most 10 Gigabit Ethernet environments.

### **Multiple OS Support**

The ENW-9801 / ENW-9803 operates completely well with most of the popular and latest operating systems including **Microsoft Windows Server**, **Linux** and **VMware**, enabling simple integration into network designs. There is no need of any modification to the server's operating system or any special software required for the ENW-9801 / ENW-9803 to be integrated into the system.

## **1.1 Package Contents**

Make sure your package contains the following items:

- 1 x ENW-9801 / ENW-9803 10 Gigabit Ethernet Adapter (w/long Profile Bracket)
- 1 x Quick Installation Guide
- 1 x CD-ROM (including this User's Manual, Quick Installation Guide and Driver)
- 1 x Low Profile Bracket

If any of these are missing or damaged, please contact your dealer immediately. If possible, retain the carton including the original packing material, and use them again to repack the product in case there is a need to return it to us for repair.

## **1.2 Features**

- PCI Express rev. 2.0 specification x4 Interface
- IP, TCP, UDP checksum offloading
- IEEE 802.1Q VLAN ID Tagged / IEEE 802.1q QoS
- Reduced CPU utilization and improved throughput
- Wake-on-LAN
- 16K jumbo frame size
- IEEE 802.3x full-duplex flow control
- Complies with Microsoft and Linux platforms

## **1.3 Gathering Tools and Documentations**

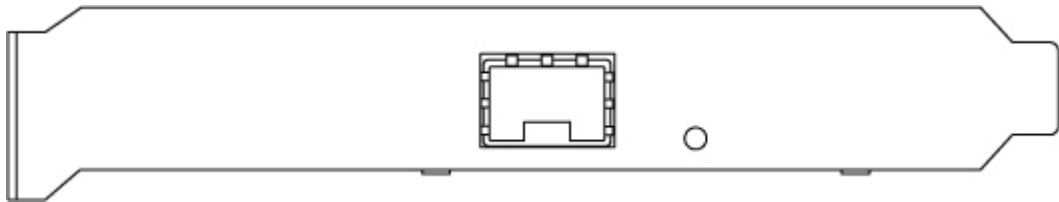
To install the ENW-9801 / ENW-9803 10 Gigabit Ethernet adapter, you need the following items:

- A suitable screw driver
- Your operating system documentation
- Your system unit documentation, including any service documentation

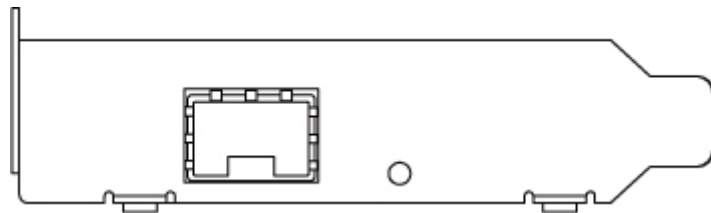
# Chapter 2 Hardware Installation

## 2.1 LED Definition

Below are the pictures of the faceplates of the ENW-9801, consisting of one LED: Link / ACT. Table 1 explains the function and state of the LED.



**Figure 1:** Long Profile Bracket of ENW-9801

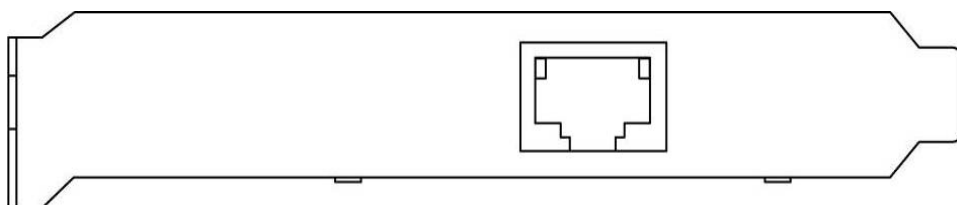


**Figure 2:** Low Profile Bracket of ENW-9801

LED	Color	Description
LNK/ACT	Green	Light: indicates a functional network link through the port. Blink fast: indicates data transmit and receive through the port.

**Table 1:** Descriptions of the ENW-9801 LED

Below are the pictures of the faceplates of the ENW-9803, consisting of two LED: Link and ACT. Table 2 explains the function and state of the LED.



**Figure 3:** Long Profile Bracket of ENW-9803



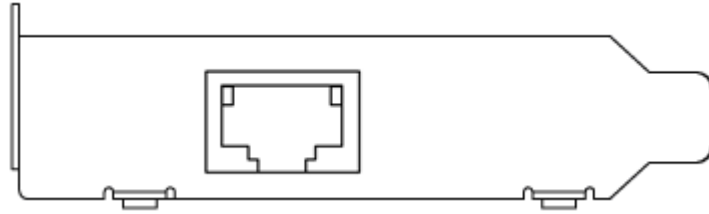


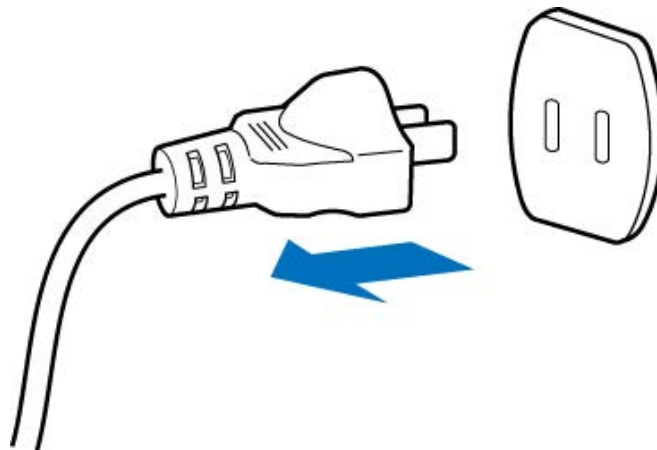
Figure 4: Low Profile Bracket of ENW-9803

LED	Color	Description
Link Speed	Orange	Indicates the link is established at 10Gbps full duplex mode.
	Green	Indicates the link is established at 1000Mbps full duplex mode.
	OFF	Indicates the link is established at 100Mbps full duplex mode.
Active	Green	Blink: indicates data transmit and receive through the port.

Table 2: Descriptions of the ENW-9803 LED

## 2.2 Hardware Installation

**Step 1:** Please turn off your PC.

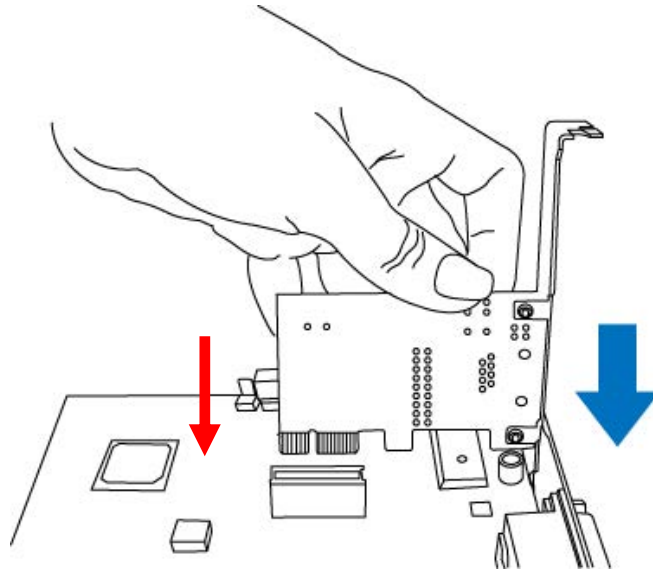


**Step 2:** Remove any metal decorations from your hands and wrists.

**Step 3:** Remove the cover from your PC.

**Step 4:** Locate an empty PCI Express slot and remove the corresponding back plate. Save the screw for use in Step 6.

**Step 5:** Carefully insert the 10 Gigabit Ethernet adapter into the chosen slot and press firmly with proper push to ensure it is fully seated in the slot.



**Step 6:** Secure the 10 Gigabit Ethernet adapter with the screw you saved in step 4.

**Step 7:** Replace the PC cover.

**Step 8:** Power on your PC and refer to the next section to install driver.

## Chapter 3 Driver Installation

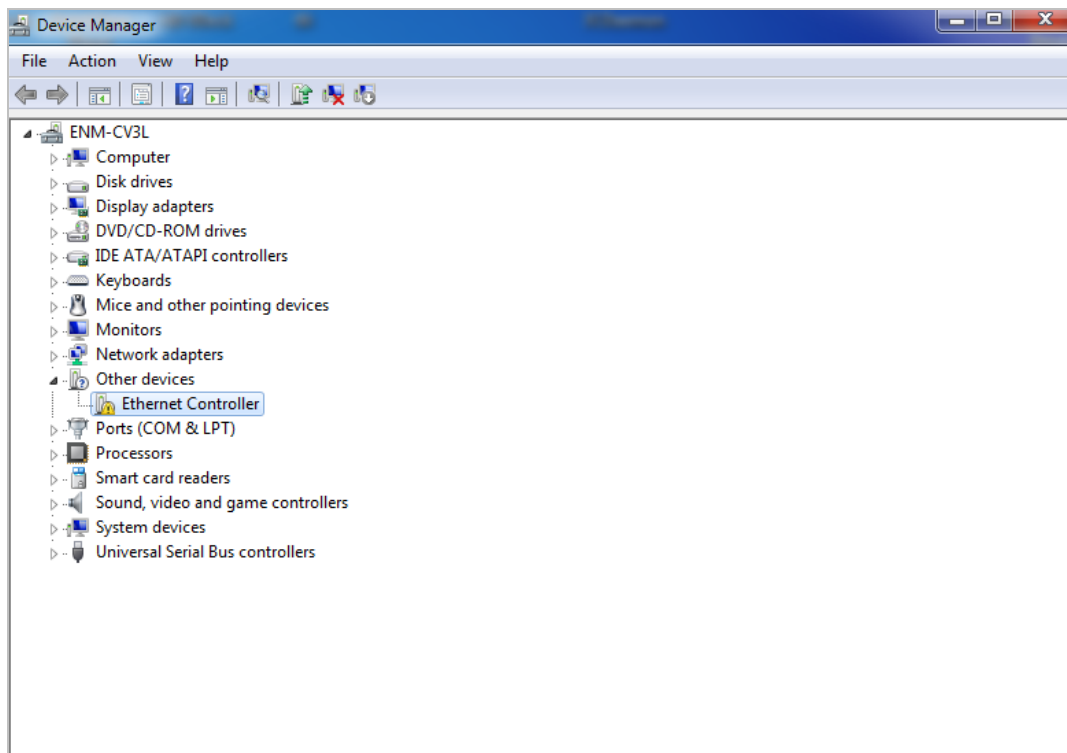
A device driver must be installed before your ENW-9801 / ENW-9803 can be used with your computer. This chapter describes how to install the driver for various operating systems. Before you begin the driver installation process, make sure you have the installation disks for your computer's operation system.

### 3.1 Installing Driver on Windows 7 and 8 / Server 2008 and 2012

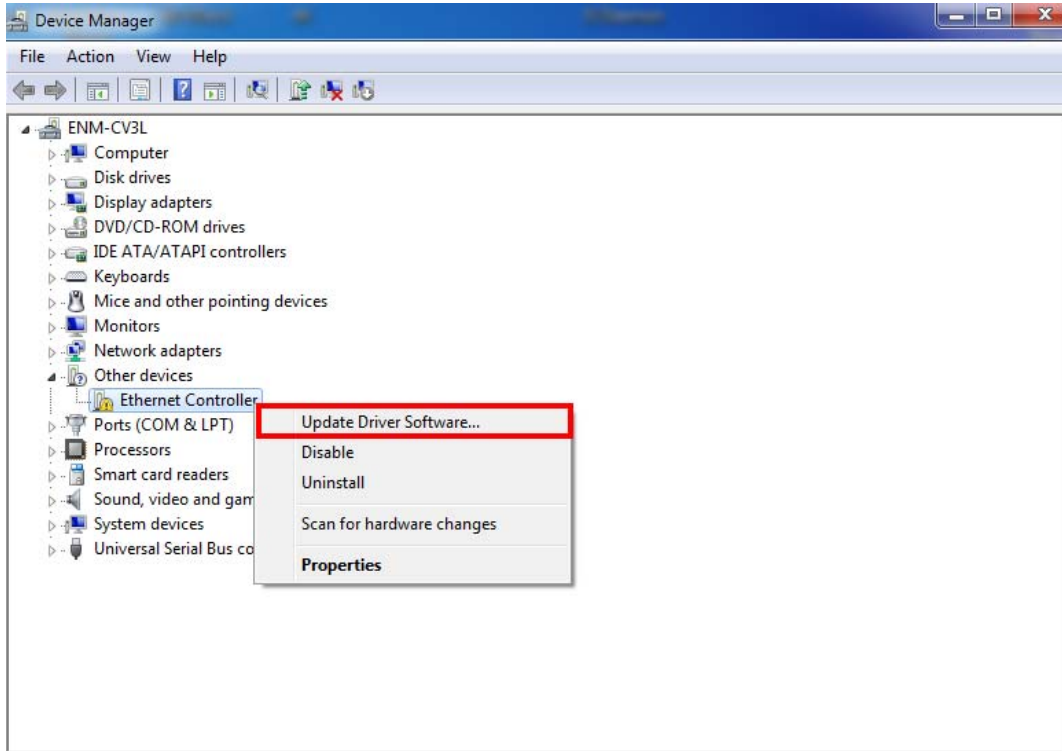


The installation of the following ENW-9801 / ENW-9803 operates under Windows 7; the Installation procedures are similar to those of the Windows 8 / Windows Server 2008 / Windows Server 2012.

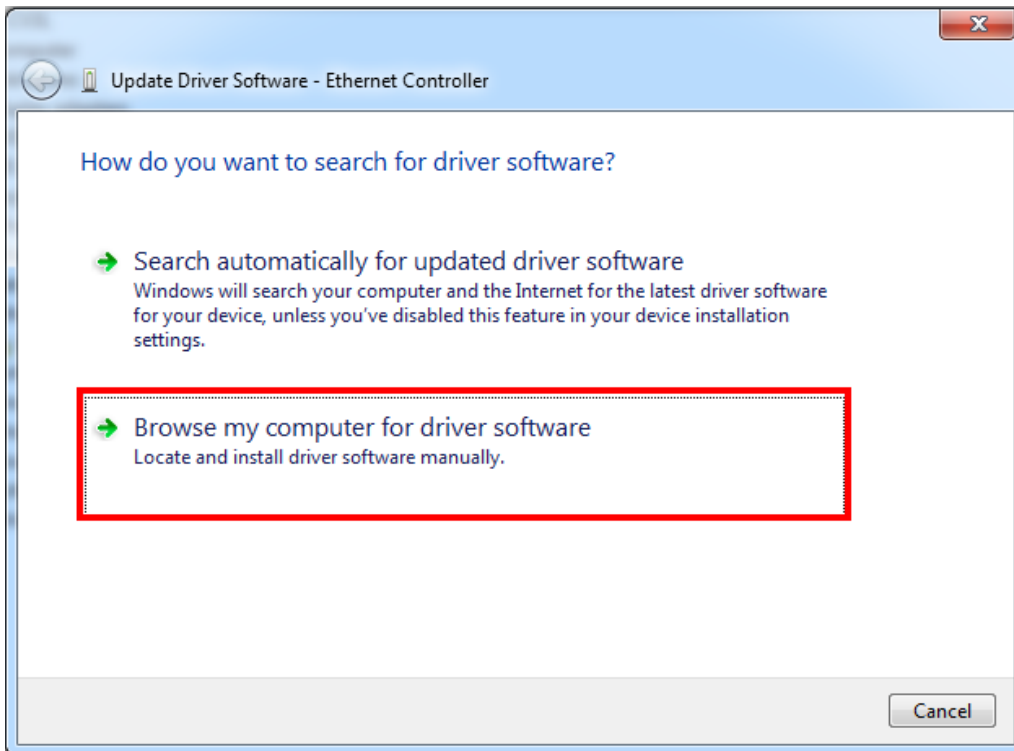
1. After installing the ENW-9801 / ENW-9803 on your PC and booting it up, Windows 7 will detect it and you have to install the driver.



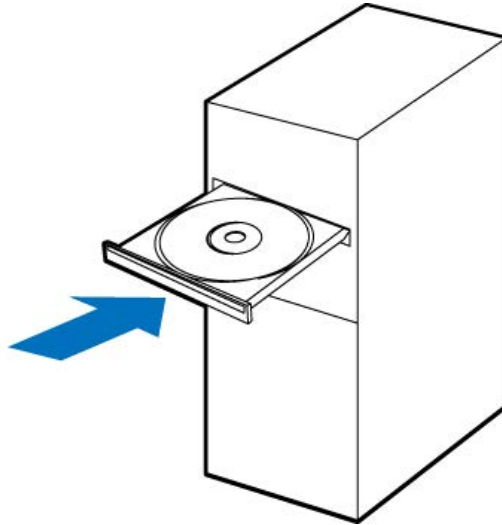
2. Please move and right-click the mouse button for Ethernet Controller item and select **“Update Driver Software”**



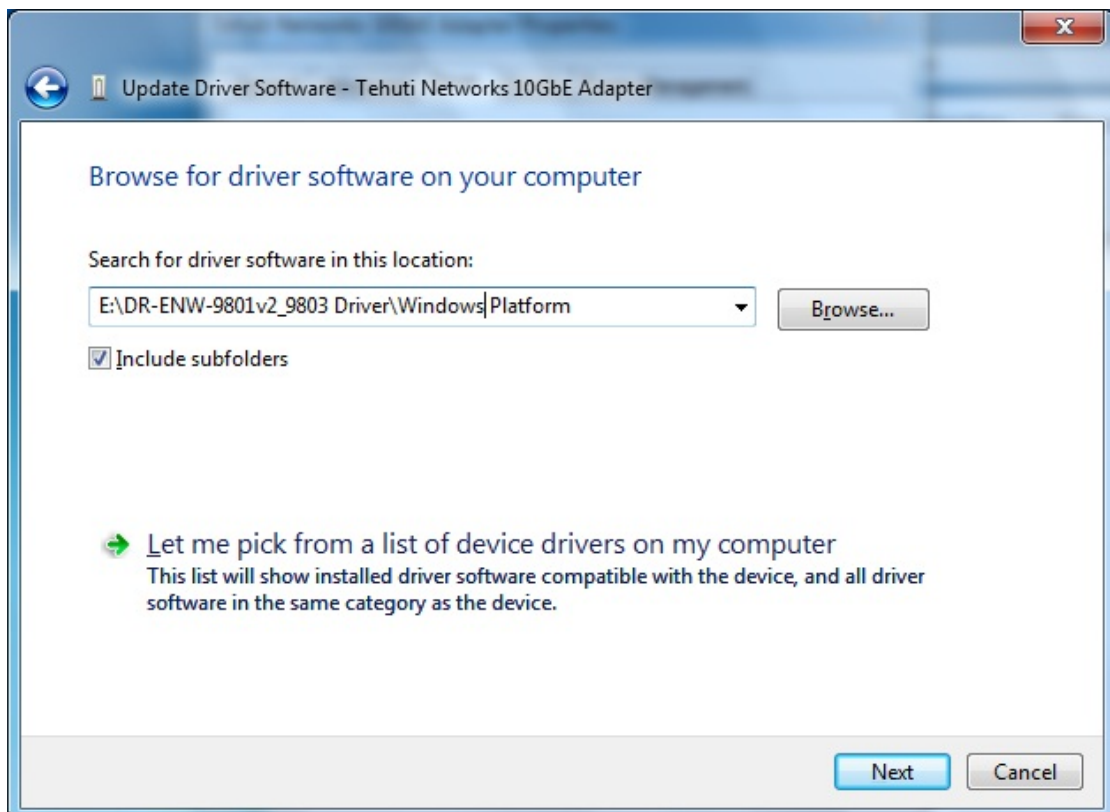
3. Please select **“Browse my computer for driver software”** for the next step.



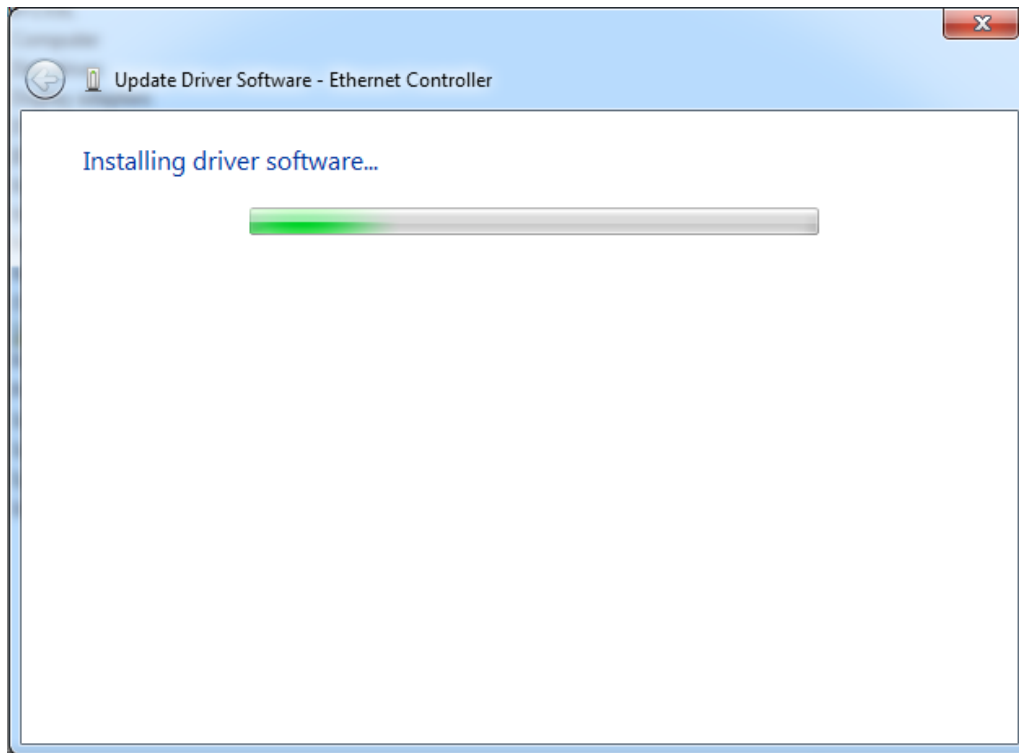
4. Insert the bundled CD into the CD-ROM driver.



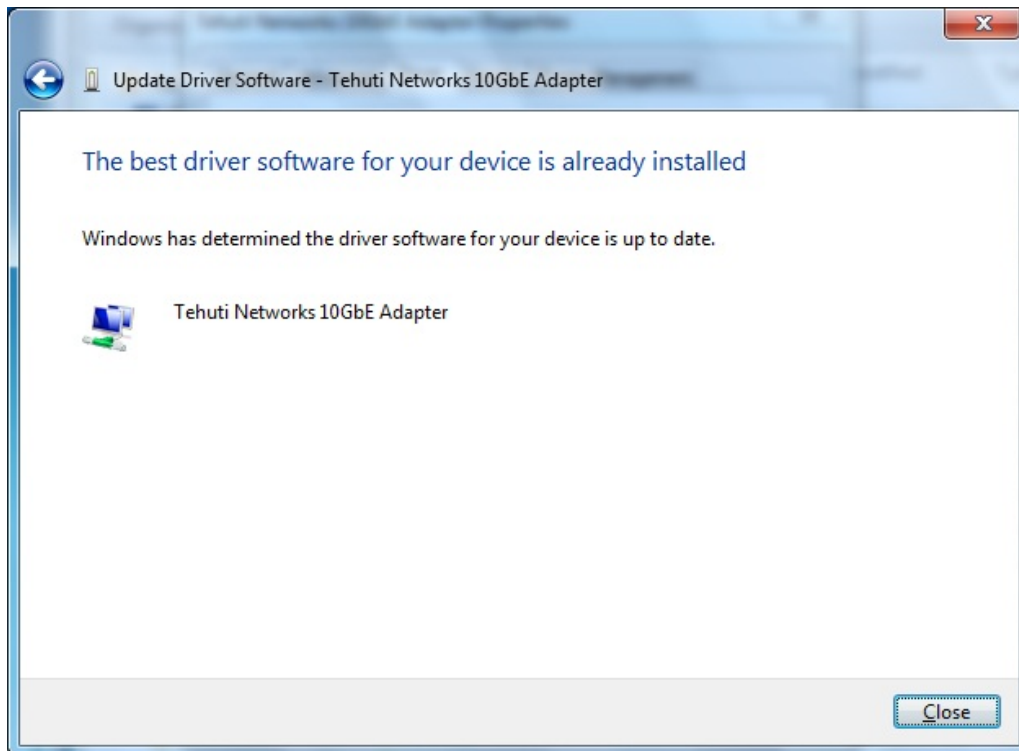
5. Please click “**Browse**” to specify the driver location to install. (Assume “**E**” is your CD-ROM drive, the driver can be found in E:\ DR-ENW-9801v2\_ENW-9803 Driver). Click “**Next**” to continue.



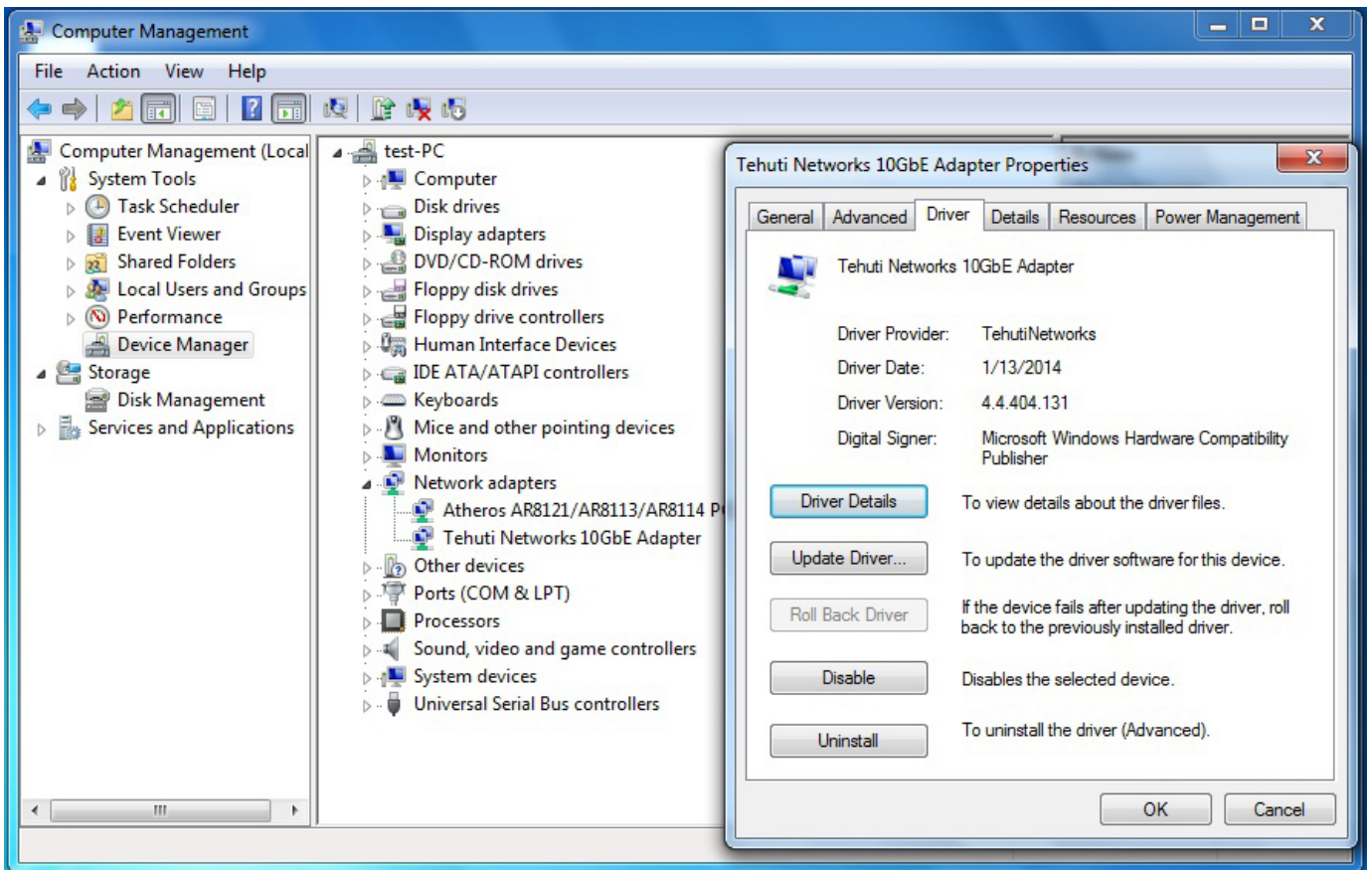
The driver is installing...



6. Click **“Close”** button to complete the driver installation.



For more details, please refer to the manual of our bundled CD-ROM.



## Chapter 4 Specifications

Product	ENW-9801	ENW-9803
<b>Hardware Specifications</b>		
Attachment Interface	PCI Express rev. 2.0 specification x4 interface	
Optical Module Options	LRM, LR, SR	NA
Memory	1Mbit internal memory	
Jumbo Frame	9K / 16K Bytes	
LED Indicators	<b>LNK / ACT:</b> Green	<b>Link Speed:</b> 10GBase-T: Orange 1000Base-TX: Green 100Base-T: None <b>Active:</b> Green
Dimensions (W x D x H)	62 x 83 x 22 mm	82 x 120 x 22 mm
Weight	47g	51g
Typical Power Consumption	5 watts	
<b>Advanced Functions</b>		
Layer 2 Features	IEEE 802.3x Flow Control support IEEE 802.1Q VLAN support	
Operating System Support	Windows Server 2008R2 32/64bits Windows Server 2012 32/64bits Windows 7 32/64bits Windows 8 32/64bits Linux 2.6.x, Linux 3.x VMware® 5.x	
<b>Standards Conformance</b>		
Regulation Compliance	FCC Part 15 Class B, CE	
Standards Compliance	IEEE 802.3ae IEEE 802.3an IEEE 802.3x IEEE 802.1Q	10GBase-X Ethernet over Fiber (ENW-9801) 10GBase-T Ethernet (ENW-9803) Flow control and back pressure VLAN tagging
<b>Environment</b>		
Operating	Temperature:	0 ~ 50 degrees C
	Relative Humidity:	5 ~ 95% (non-condensing)
Storage	Temperature:	-10 ~ 85 degrees C
	Relative Humidity:	5 ~ 95% (non-condensing)