

150Mbps 802.11n Wireless Portable AP/Router

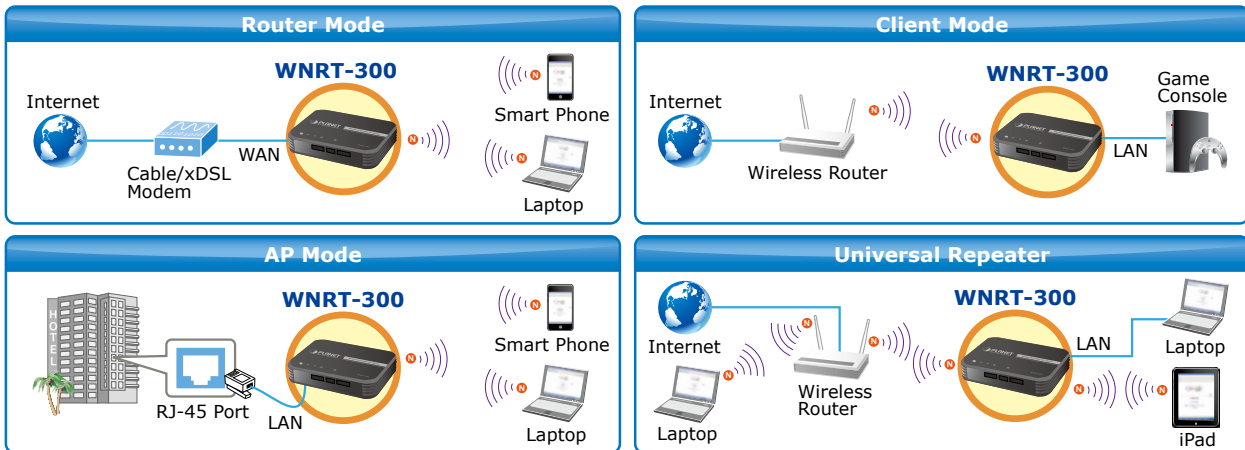


Multiple Wireless Network Technologies for Greater Access

PLANET Wireless Portable Broadband Router, the WNRT-300 features 802.11n radio with 1T1R antenna technology compliant with 802.11b/g/n standards. Compared with general wireless routers, the WNRT-300 offers more powerful and flexible capability for business demands to access Internet with true mobility and range extension of wireless network.

More Flexibility and Mobility

With the tiny-sized and stylish design, the WNRT-300 is easy to carry for the true mobility. It can operate in various environments with the hardware switch modes including **AP**, **Router**, and **Client**, which helps to immediately set up a wireless network without software configuration. The portable design and operation flexibility make the WNRT-300 suitable for travelling, moving and outdoor applications.



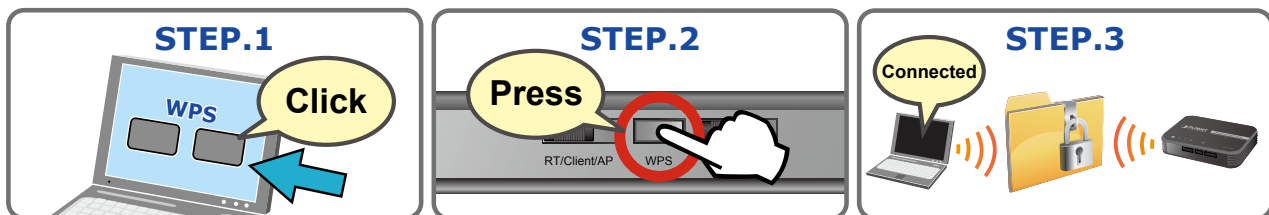
Built-in High Capacity Battery

The WNRT-300 has one built-in rechargeable Li-ion battery and its power supplied through mini USB interface. The power can be directly charged via the computer's USB port which increases the convenience even when there is no power outlet available.

One-touch Secure Wireless Connection

In order to simplify security settings for home and SOHO network, the WNRT-300 supports **Wi-Fi Protected Setup (WPS)** with configuration in PBC and PIN type. Just push the WPS button or key in the PIN code, the secure connection between the WNRT-300 and the wireless clients can be built immediately, which offers users a convenient and fast method to construct a secure wireless network.

WPS (Wi-Fi Protected Setup) Quick & Easy Wireless Connection



Wide Range of Wireless Security Support

To secure the wireless communication, the WNRT-300 supports most up-to-date encryptions including WPA/WPA2-PSK with TKIP/AES. Made to fulfill enterprise and various applications demand, the WNRT-300 enhances security and management features such as multiple SSID and IEEE 802.1Q VLAN support. It can create up to 5 virtual standalone AP with 5 different SSID according to individual security levels and encryption scheme of various wireless devices. Even more, the VLAN support allows multiple SSID to access internal VLAN topology.

Advanced Firewall Security

In the Router mode, the WNRT-300 supports NAT functions and allows multiple users to access Internet via only one single legal IP. It provides Port Forwarding and DMZ for LAN PC to act as an application server. Furthermore, the advanced firewall by the WNRT-300 can protect your Intranet clients from unauthorized accesses and various DoS attacks from the Internet. In aspect of the firewall, the WNRT-300 provides IP/ MAC/ Port/ URL filtering, and prevents possible hackers attack.

Easy Setup Anytime Anywhere

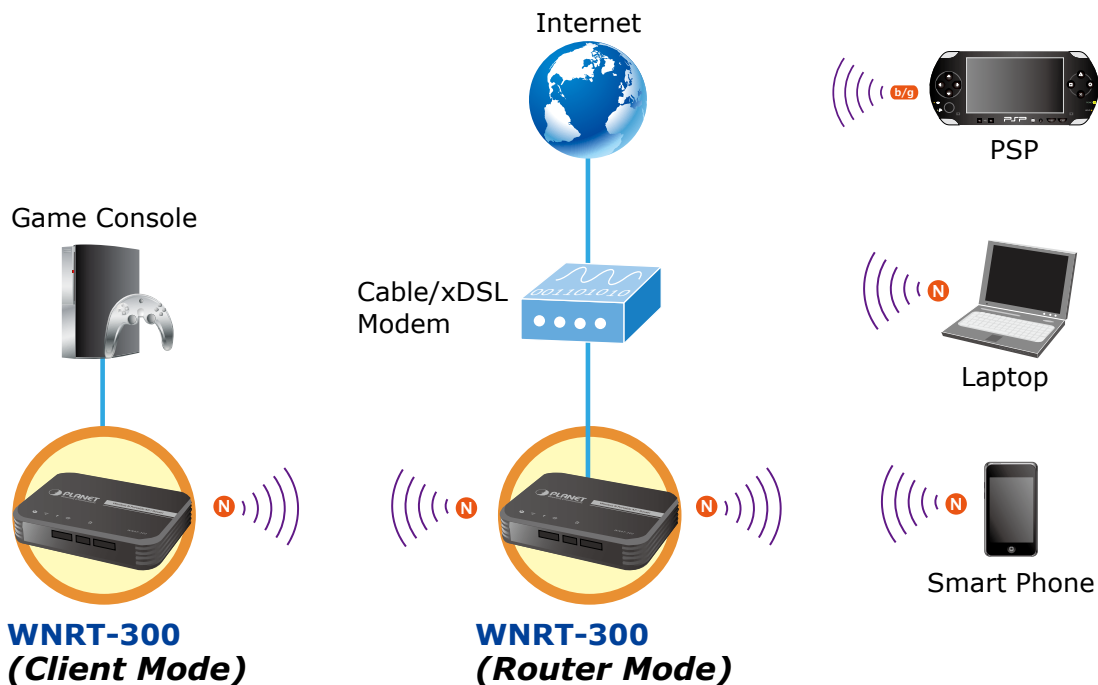
The WNRT-300 provides a total solution for home and business users. With the High Speed 802.11n wireless technology, the WNRT-300 is easy to integrate the wireless devices with existing wired network.



APPLICATIONS

Handy Size, Multiple Modes, Powerful Connectivity

With IEEE 802.11n technology compliant, the WNRT-300 provides a better wireless performance than 802.11g compliant devices. The WNRT-300 also features the latest wireless security and firewall functions to prevent unauthorized access or invasion. Furthermore, just follow the easy Setup Wizard in the WNRT-300, you can relax to enjoy the high speed wireless Internet transmission simultaneously via your iPhone, iPad, laptop, and etc.



KEY FEATURES

INDUSTRIAL COMPLIANT WIRELESS LAN & LAN

- Compliant with IEEE 802.11n wireless technology capable of up to 150Mbps data rate
- Backward compatible with 802.11b/g standard
- Equipped with one 10/100Mbps RJ-45 Ethernet port for LAN/WAN, Auto MDI/MDI-X supported

WIRELESS NETWORK RANGE EXTENDER

- Multiple Wireless Modes: AP, WDS, Repeater, Universal Repeater, Client
- Supports WMM (Wi-Fi Multimedia), Wireless QoS
- Supports IAPP (Inter Access Point Protocol), Wireless Roaming

FIXED-NETWORK BROADBAND ROUTER

- Supported Internet types: Dynamic IP/ Static IP/ PPPoE/ L2TP/ PPTP
- Supports Static & Dynamic (RIP1 and 2) Routing
- Supports IP / MAC-Based Bandwidth Control
- Supports 802.1d STP & IGMP Proxy

SECURE NETWORK CONNECTION

- Advanced security: 64/128-bit WEP, WPA-Enterprise/ WPA2-Enterprise and WPA-PSK/WPA2-PSK with TKIP/AES Encryption, 802.1x Authentication

- Built-in NAT firewall features with Port/ IP/ MAC/ URL Filtering, and DoS protection
- Supports 802.1Q VLAN

ADVANCED NETWORKING FUNCTION FOR SPECIFIC APPLICATION

- Supports multiple sessions IPSec, L2TP, PPTP, and IPv6 VPN pass-through
- Supports Port Forwarding, DMZ, UPnP and Dynamic DNS for various networking applications
- Supports DHCP Server

EASY TO INSTALL & MANAGEMENT

- Web-Based UI and setup Wizard for easy configuration
- System status monitoring includes DHCP Client and System Log

FLEXIBLE APPLICATION & BUSINESS-ORIENTED DESIGN

- Portable and Pocket-sized design for true mobility
- Hardware switchable operation modes: Router / AP / Client
- One-touch Wi-Fi Protected Setup (WPS)
- Built-in rechargeable Li-ion battery

SPECIFICATION

Product	150Mbps 802.11n Wireless Portable Broadband Router	
Model	WNRT-300	
Hardware Specification		
Interface	LAN/WAN	1 x 10/100Mbps Auto MDI/MDI-X RJ45 port
Antenna	Gain	1 x Internal 2dBi Antenna
	Orientation	Omni-directional
Button/Switch	Front panel (from left to right):	
	- Mode Selection Switch (Router / Client / AP) - WPS Button - Power On / Off Switch	
LED Indicators	Rear panel:	
	- Reset button *Push for above 5 seconds to reset to factory default settings	
LED Indicators	PWR, WLAN, WAN/LAN, WPS, CHG	
Material	Plastic	
Dimension (W x D x H)	88 x 62 x 18 mm	
Weight	With battery: 80g	
	Without battery: 58g	
Battery	Built-in Rechargeable Li-ion Battery (3.7V, 1050mAh)	
Power Requirement	DC 5V , 0.4A maximum, connected through mini-USB connector	
Power Adapter	AC Input: 100~240V AC (50/60Hz)	
	DC Output: 5V with max. 1A current	
Standard Accessory	Power Adapter x 1, USB Cable x 1, Ethernet Cable x 1, Li-ion Battery x 1, CD-ROM x 1, Quick Guide x 1	

Wireless Interface Specification	
Standard	Compliance with IEEE 802.11b/g/n
Frequency Band	2.4 ~ 2.4835GHz
Extend Frequency	DSSS
Modulation Type	DBPSK, DQPSK, QPSK, CCK and OFDM (BPSK / QPSK / 16-QAM / 64-QAM)
Data Transmission Rates	11n: Up to 150Mbps (Dynamic) 11g: Up to 54Mbps (Dynamic) 11b: Up to 11Mbps (Dynamic)
Transmission Distance	Indoor up to 100m Outdoor up to 300m (Depends on the environment conditions)
Channel	America/ FCC: 2.412 ~ 2.462GHz (11 Channels) Europe/ ETSI: 2.412 ~ 2.472GHz (13 Channels) Japan/ TELEC: 2.412 ~ 2.484GHz (14 Channels)
Max. RF Power	20 dBm (EIRP)
Receive Sensitivity	135M: -68dBm@10% PER 54M: -68dBm@10% PER 11M: -85dBm@8% PER
Software Features	
Operation Mode	<ul style="list-style-type: none"> ■ AP ■ Router ■ Client (Switchable by hardware)
Wireless Mode	AP, WDS, Repeater (WDS+AP), Universal Repeater (AP + Client)
Encryption Security	WEP (64/128-bit) encryption security WPA-Enterprise / WPA2-Enterprise (TKIP/AES) WPA-Personal / WPA2-Personal (TKIP/AES) 802.1x Authentication
Wireless Security	Provides wireless LAN ACL (Access Control List) filtering Wireless MAC address filtering Supports WPS (Wi-Fi Protected Setup) Multiple SSID up to 5 wireless groups, each mapped to a separate 802.1p/q tagged VLAN Enable / Disable SSID Broadcast
Wireless Advanced	WMM (Wi-Fi Multimedia): 802.11e Wireless QoS IAPP (Inter Access Point Protocol): 802.11f Wireless Roaming Provides Wireless Statistics
Internet Connection Type	Shares data and Internet access by supporting the following types of internet access: <ul style="list-style-type: none"> - PPPoE - Dynamic IP - Static IP - PPTP - L2TP
Firewall	NAT firewall with SPI (Stateful Packet Inspection) Built-in NAT server supporting Port Forwarding, and DMZ Built-in firewall with IP address/ MAC address/ Port/ URL filtering Supports ICMP-FLOOD, UDP-FLOOD, TCP-SYN-FLOOD filter, and DoS protection Supports 802.1Q VLAN up to 4
Routing Protocol	Static / Dynamic (RIP1 and 2) Routing
VPN Pass-through	PPTP, L2TP, IPSec, IPv6
LAN	Built-in DHCP server supporting static IP address distributing Supports UPnP, Dynamic DNS Supports IGMP Proxy Supports 802.1d STP (Spanning Tree) IP / MAC-based Bandwidth Control
System Management	Web-Based (HTTP) management interface SNTP time synchronize Easy firmware upgrade System Log supports Remote Log
Standards Conformance	
IEEE Standards	IEEE 802.11n (1T1R, up to 150Mbps) IEEE 802.11g IEEE 802.11b IEEE 802.11i IEEE 802.3 10Base-T IEEE 802.3u 100Base-TX IEEE 802.3x Flow Control
Other Protocols and Standards	CSMA/CA, CSMA/CD, TCP/IP, DHCP, ICMP, NAT, PPPoE, SNTP

Environment	
Temperature	Operating: 0 ~ 40 Degree C Storage: -40 ~ 70 Degree C
Humidity	Operating: 10 ~ 90% (Non-Condensing) Storage: 5 ~ 90% (Non-Condensing)

ORDERING INFORMATION

WNRT-300	150Mbps 802.11n Wireless Portable AP / Router
-----------------	---

RELATED PRODUCTS

WNL-U554	802.11n Wireless USB 2.0 Adapter
WNL-U554A	802.11n Wireless USB 2.0 Adapter External 3dBi Antenna
WNL-U554M	802.11n Micro Wireless USB 2.0 Adapter
WNL-9501	802.11n Wireless PCI Express Adapter

* To have best performance and wireless connection, sincerely advice to match the above related products.