

Quick Installation Guide

WDAP-C7200E

1200Mbps 802.11ac Dual Band
Ceiling-mount Wireless Access Point



1. Package Contents

Thank you for choosing PLANET WDAP-C7200E. Before installing the AP, please verify the contents inside the package box. The WDAP-C7200E should contain the following items in the package:

WDAP-C7200E

Quick Guide

Ethernet Cable

Mounting Kit



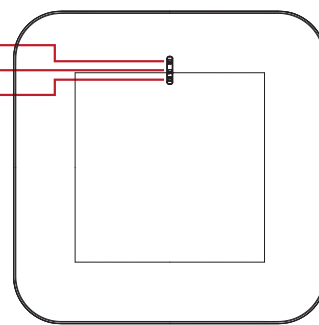
If there is any item missing or damaged, please contact the seller immediately.

- 1 -

2. Physical Introduction

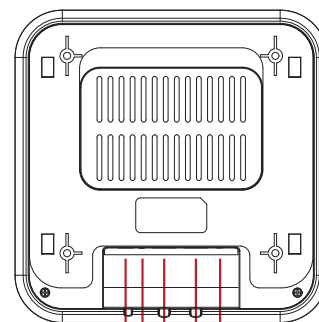
Front Panel

SYS
2.4G
5G



Rear Panel

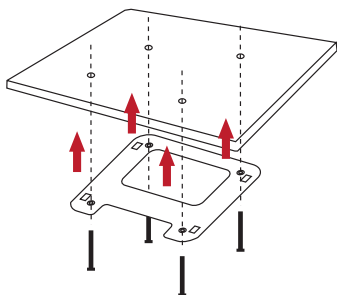
12V DC IN
LED
PoE
Reset
LAN



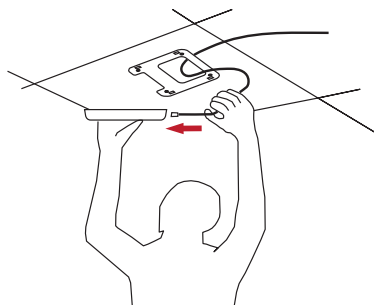
- 2 -

3. Hardware Installation

Step 1: Take the mounting bracket, put it on the target place by aligning the holes and fix it with the supplied screws.

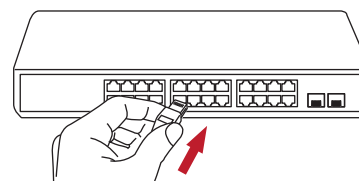


Step 2: Load the device into the mounting bracket, and be sure the device is mated with fixed screws. Then, lock the device in position and plug the Ethernet cable into the WDAP-C7200E.



- 3 -

Step 3: Plug the other end of the Ethernet cable into the PoE switch.

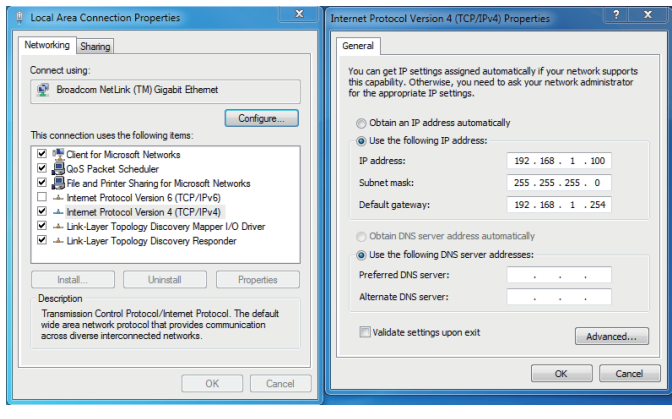


- 4 -

4. Wired Network Configuration (Windows 7 and Windows 10)

A computer with wired Ethernet connection is required for the first-time configuration of the Wireless AP.

1. Click the **"Start"** button located at the lower-left corner of your computer.
2. Click **"Control Panel"**.
3. Double-click the **"Network and Sharing Center"** icon.
4. Click **"Change Adapter Settings"**.
5. Double-click **"Local Area Connection"**.
6. Select **"Internet Protocol Version 4 (TCP/IPv4)"** and click **"Properties"**.
7. Select **"Use the following IP address"** and then click the **"OK"** button twice to save the configuration. For example, the default IP address of the WDAP-C7200E is 192.168.1.253 and the router is 192.168.1.254. You may choose from 192.168.1.1 to 192.168.1.252.



- 5 -

5. Enter into the Web Management

Default IP Address: **192.168.1.253**

Default Password: **admin**

Default SSID (2.4GHz): **Planet_2.4G**

Default SSID (5GHz): **Planet_5G**

Step 1: The Web management allows you to access and manage the Wireless AP easily. Launch the Web browser and enter the default IP address <http://192.168.1.253>



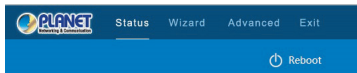
Step 2: When the login window pops up, please enter password. The default password is **"admin"**. Then click the **LOGIN** button to continue.



For security reasons, it is recommended to change the password at the first login and memorize it.

- 6 -

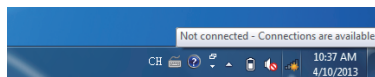
Step 3: After you enter into the Web User Interface, go to **Advanced** to configure your wireless network. For security reasons, strongly recommended to configure the Encryption Method and Passphrase of your wireless network.



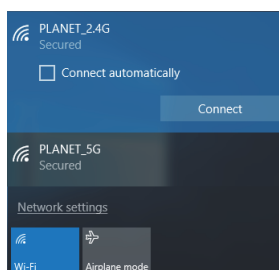
Step 4: Once the basic configuration of the WDAP-C7200E is done, click the **"Apply"** button to make the change take effect.

6. Wireless Network Connection

Step 1: Right-click on the **network icon** displayed in the system tray.



Step 2: Highlight the wireless network (SSID) to connect and click the **[Connect]** button.



- 7 -

Further Information:

The above steps introduce the simple installations and configurations of the device. For further configurations, please refer to the user manual, which can be downloaded from the website. <http://www.planet.com.tw/en/support/download.php?type1=4&model=49093&type=3>



If you have further questions, please contact the local dealer or distributor where you purchased this product.

PLANET Technology Corp.
10F., No 96, Minquan Rd., Xindian Dist.,
New Taipei City 231, Taiwan



2011-E11120-000

- 8 -